

# Russia E / Japan

V4.15.04 Update: 03 JUN 2012

**NOT FOR NAVIGATIONAL PURPOSES**

Further Details: [www.planningcharts.de](http://www.planningcharts.de)  
Contact: [feedback@planningcharts.de](mailto:feedback@planningcharts.de)

RUSSIAN		ICAO	Airport	APP	RWY	ELEV	VAR	RFF
Good Morning	<dóbraje útro>	UEEE	Yakutsk	I123L G05R	3.4	325	16°W	7-8
Good Afternoon	<dóbrí díen>	UELL	Neryungri Chulm	-08 -26	3.6	2812	13°W	n.a
Good Evening	<dóbrí wétschie>	UERP	Poliarny	I35 N17	3.1	1660	9°W	7*
Hello	<strássdwujiti>	UERR	Mirny	I24 N06	2.8	1156	10°W	n.a
Good Bye	<da swidánja>	UHBB	Blagoveshchensk	I36 N18	2.8	638	12°W	n.a
Bye	<paká>	UHHH	Khabarovsk	I123L I05R / N05L N23R	4.0 / 3.5	244	12°W	9
Thank You	<spassiba>	UHSS	Yuzhno-Sakhal.	I01 I19	3.4	59	10°W	n.a
		UHHW	Vladivostok	I125L I07R / I25R N07L	2.5 / 3.5	46	10°W	n.a
		UOOR	Norilsk	I01 I19	3.4	574	19°E	8

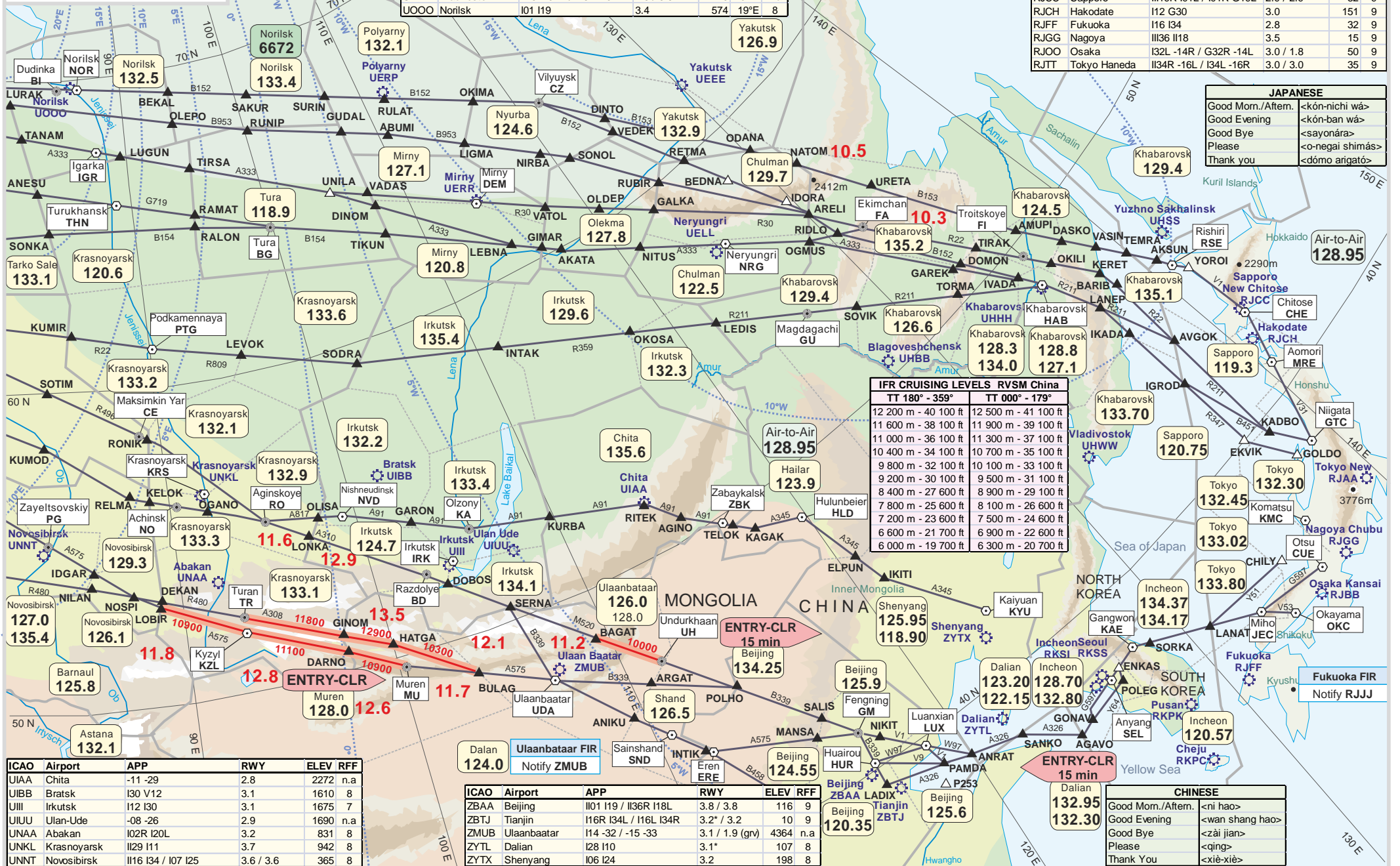
ICAO	Airport	APP	RWY	ELEV	RFF
RKPC	Jeju	I06 I24 / -13 -31	3.1 / 1.4*	118	9
RKPK	Busan	I36L G18R / I36R G18L	3.2 / 2.7	6	9
RKSI	Incheon	I115L I133R / I133L I115R	3.7 / 3.7	23	10
RKSS	Seoul Gimpo	I114R I32L / I32R I14L	3.2 / 3.6	58	10

ICAO	Airport	APP	RWY	ELEV	RFF
RJAA	Tokyo Narita	I116R I34L / I16L I34R	3.2* / 2.5	141	10
RJBB	Osaka Kansai	I06R I24L / I06L I24R	3.5 / 4.0	26	10
RJCC	Sapporo	I119R I01L / I01R G19L	2.9 / 2.9	82	9
RJCH	Hakodate	I12 G30	3.0	151	9
RJFF	Fukuoka	I16 I34	2.8	32	9
RJGG	Nagoya	I136 I18	3.5	15	9
RJOO	Osaka	I32L -14R / G32R -14L	3.0 / 1.8	50	9
RJTT	Tokyo Haneda	I134R -16L / I34L -16R	3.0 / 3.0	35	9

JAPANESE	
Good Morn./Aftern.	<kón-nichi wá>
Good Evening	<kón-ban wá>
Good Bye	<sayonára>
Please	<o-negai shimás>
Thank you	<dómo arigatô>

IFR CRUISING LEVELS RVSM China	
TT 180° - 359°	TT 000° - 179°
12 200 m - 40 100 ft	12 500 m - 41 100 ft
11 600 m - 38 100 ft	11 900 m - 39 100 ft
11 000 m - 36 100 ft	11 300 m - 37 100 ft
10 400 m - 34 100 ft	10 700 m - 35 100 ft
9 800 m - 32 100 ft	10 100 m - 33 100 ft
9 200 m - 30 100 ft	9 500 m - 31 100 ft
8 400 m - 27 600 ft	8 900 m - 29 100 ft
7 800 m - 25 600 ft	8 100 m - 26 600 ft
7 200 m - 23 600 ft	7 500 m - 24 600 ft
6 600 m - 21 700 ft	6 900 m - 22 600 ft
6 000 m - 19 700 ft	6 300 m - 20 700 ft



ICAO	Airport	APP	RWY	ELEV	RFF
UIAA	Chita	-11 -29	2.8	2272	n.a
UIBB	Bratsk	I30 V12	3.1	1610	8
UIII	Irkutsk	I12 I30	3.1	1675	7
UIUU	Ulan-Ude	-08 -26	2.9	1690	n.a
UNAA	Abakan	I02R I20L	3.2	831	8
UNKL	Krasnoyarsk	I129 I11	3.7	942	8
UNNT	Novosibirsk	I116 I34 / I07 I25	3.6 / 3.6	365	8

ICAO	Airport	APP	RWY	ELEV	RFF
ZBAA	Beijing	I101 I19 / I136R I18L	3.8 / 3.8	116	9
ZBTJ	Tianjin	I16R I34L / I16L I34R	3.2* / 3.2	10	9
ZMUB	Ulaanbaatar	I14 -32 / -15 -33	3.1 / 1.9 (grv)	4364	n.a
ZYTL	Dalian	I28 I10	3.1*	107	8
ZYTX	Shenyang	I06 I24	3.2	198	8

CHINESE	
Good Morn./Aftern.	<ni hao>
Good Evening	<wan shang hao>
Good Bye	<zai jian>
Please	<qing>
Thank You	<xiè-xiè>