

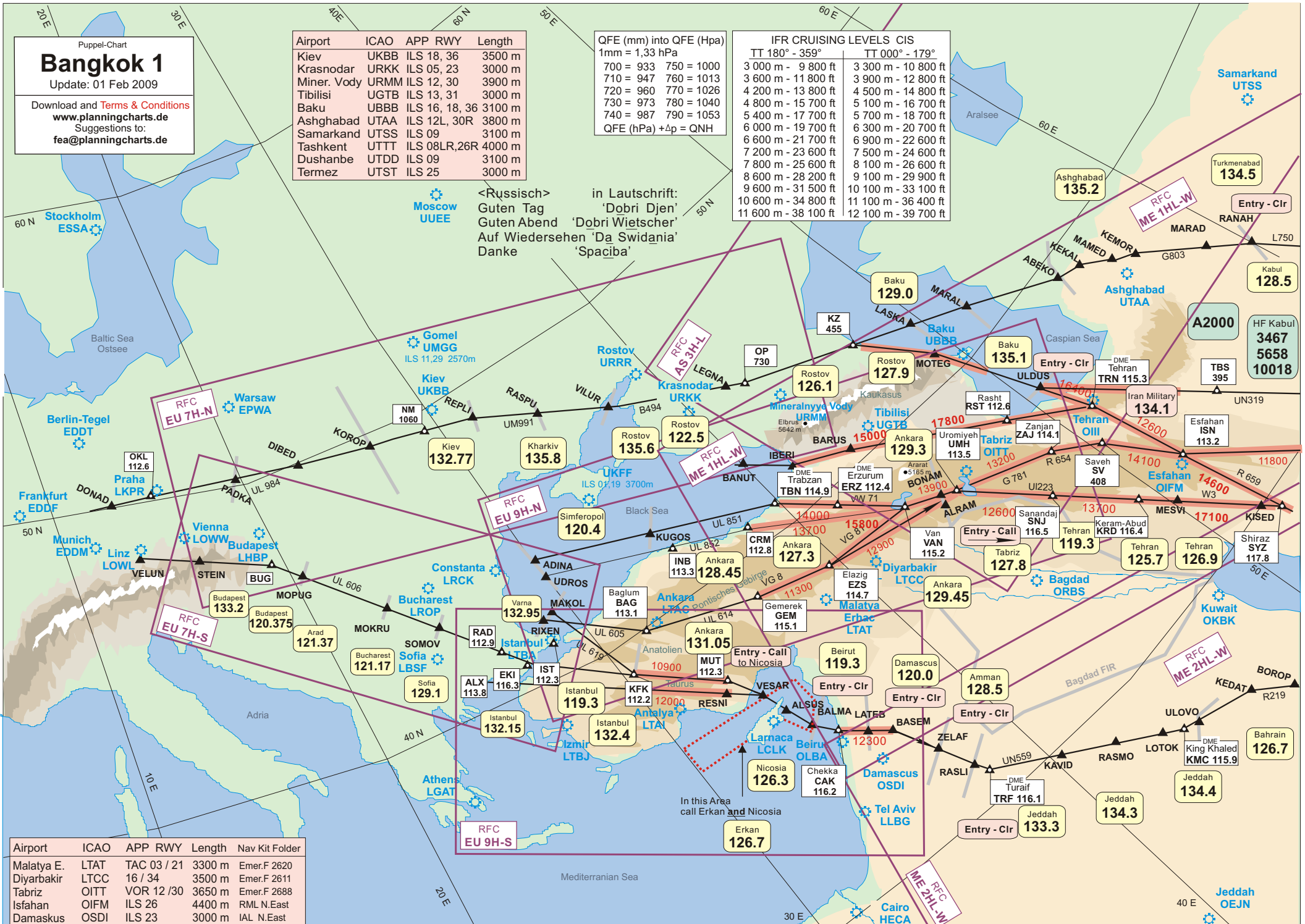
Poppel-Chart  
**Bangkok 1**  
 Update: 01 Feb 2009  
 Download and [Terms & Conditions](#)  
[www.planningcharts.de](http://www.planningcharts.de)  
 Suggestions to:  
[fea@planningcharts.de](mailto:fea@planningcharts.de)

Airport	ICAO	APP RWY	Length
Kiev	UKBB	ILS 18, 36	3500 m
Krasnodar	URKK	ILS 05, 23	3000 m
Miner. Vody	URMM	ILS 12, 30	3900 m
Tibilisi	UGTB	ILS 13, 31	3000 m
Baku	UBBB	ILS 16, 18, 36	3100 m
Ashghabad	UTAA	ILS 12L, 30R	3800 m
Samarkand	UTSS	ILS 09	3100 m
Tashkent	UTTT	ILS 08LR, 26R	4000 m
Dushanbe	UTDD	ILS 09	3100 m
Termez	UTST	ILS 25	3000 m

QFE (mm) into QFE (Hpa)  
 1mm = 1,33 hPa  
 700 = 933 750 = 1000  
 710 = 947 760 = 1013  
 720 = 960 770 = 1026  
 730 = 973 780 = 1040  
 740 = 987 790 = 1053  
 QFE (hPa) + Δp = QNH

IFR CRUISING LEVELS CIS	
TT 180° - 359°	TT 000° - 179°
3 000 m - 9 800 ft	3 300 m - 10 800 ft
3 600 m - 11 800 ft	3 900 m - 12 800 ft
4 200 m - 13 800 ft	4 500 m - 14 800 ft
4 800 m - 15 700 ft	5 100 m - 16 700 ft
5 400 m - 17 700 ft	5 700 m - 18 700 ft
6 000 m - 19 700 ft	6 300 m - 20 700 ft
6 600 m - 21 700 ft	6 900 m - 22 600 ft
7 200 m - 23 600 ft	7 500 m - 24 600 ft
7 800 m - 25 600 ft	8 100 m - 26 600 ft
8 600 m - 28 200 ft	9 100 m - 29 900 ft
9 600 m - 31 500 ft	10 100 m - 33 100 ft
10 600 m - 34 800 ft	11 100 m - 36 400 ft
11 600 m - 38 100 ft	12 100 m - 39 700 ft

<Russisch> in Lautschrift:  
 Guten Tag 'Dobri Djen'  
 Guten Abend 'Dobri Wietscher'  
 Auf Wiedersehen 'Da Swidania'  
 Danke 'Spaciba'



Airport	ICAO	APP RWY	Length	Nav Kit Folder
Malatya E.	LTAT	TAC 03 / 21	3300 m	Emer.F 2620
Diyarbakir	LTCC	16 / 34	3500 m	Emer.F 2611
Tabriz	OITT	VOR 12 / 30	3650 m	Emer.F 2688
Isfahan	OIFM	ILS 26	4400 m	RML N.East
Damaskus	OSDI	ILS 23	3000 m	IAL N.East